



- c o m p a n y p r o f i l e

34 Murray Street
Tanunda SA 5352

P. 08 8563 1155
F. 08 8563 1055

Issued : 090617

■ company profile

JBG Architects is a Barossa Valley based architectural company with a commitment to quality design and practical solutions. We believe in working closely with our clients to generate individual building developments and to ensure project requirements and architectural design are compatible from the outset.

>history

JBG Architects Pty Ltd commenced business as JBG Design in 1990 offering custom design services for residential, commercial and community buildings works throughout the Barossa Valley, Clare Valley and Adelaide regions.

In 1995 principal, Jamie Gladigau, expanded expertise to include medium scale educational and institutional projects through employment opportunities in New South Wales.

JBG Architects began work in South Australia in 1998 and are now involved in the design and implementation of successful winery, commercial and residential projects throughout areas of South + Eastern Australia.

>services

Our services include:

- site master planning
- facilities planning
- feasibility study
- specialist building design and documentation
- contract administration
- integrated project management
- 3D presentation
- environmental design
- interior design
- landscape design

>personnel

Architectural:	Jamie Gladigau	RAIA B.Arch(Hons)
	Steven Bell	Ass. Dip Arch D; Adv Cert. Bld. Tech
	Katrina Swiatczak	B.Arch
	Graham Baker	Dip in Building Design + Technology
Administration/Interior:	Claire Boland	Cert Business Admin
		Cert Interior Design

In addition to these key personnel we have a core team of secondary consultants to address a diverse range of small to medium sized projects.

>qualifications

SA Board of Architects

Royal Australian Institute of Architects - Practise member

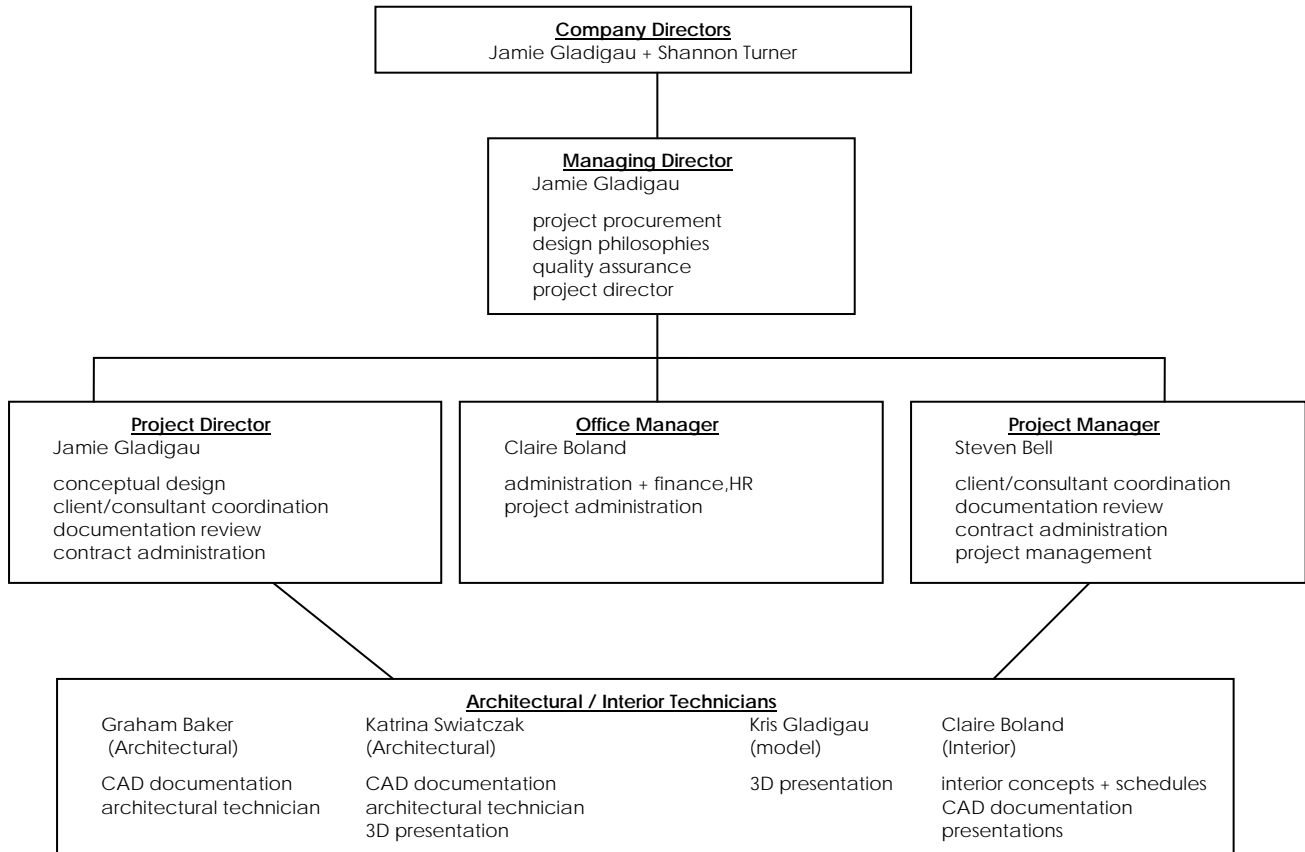
>recognitions

Winner: AISC SA 2000 Architectural Steel Design Award
for Kirribilly Wines – New Winery Canopies

Winner: Casella Wines – Head Office

Architectural Conception in association with Tanner Architects + Luigi Rosselli

>JBG Architects organisational chart



■ commercial projects

1998-2009 various projects throughout SA and NSW
Selected projects -

1998	Tarac Industries New Laboratory Fit-out	Nuriootpa SA
2000	Clare Centre Development New Commercial Development	Clare SA
2001	Gnadenfrei B+B Fitout	Maranaga SA
2001	Seppeltsfield B+B Restoration	Seppeltsfield SA
2001	Brice Hill Wine Bar + Restaurant Fitout	Clare SA
2001	PM Goers Commercial Tenancies Fitout	Tanunda SA
2002	Tubbies Cooperage Cooperage Building	Williamstown SA
2002	Barossa Printmasters Production + Administration Building	Tanunda SA
2002	Tanunda Football Club Bar Fitout	Tanunda SA
2003	JBG Architects Office Fitout	Tanunda SA
2003	Heuzenroeder + Heuzenroeder Office Addition	Tanunda SA
2003	Lady Tramp Office Additions	Tanunda SA
2004	A Place in the Barossa Shop fitout	Tanunda SA
2004	Stockwell Storage Wine Storage Redevelopment	Stockwell SA
2004	Tanunda Lutheran School Redevelopment Masterplan	Tanunda SA
2004	Kirribilly Estate Industrial Development	Clare SA
2004	Barossa Weintal Resort Function Room	Tanunda SA
2004	Logos Houses Residential Development	Tanunda SA
2004	Railway Townhouses Residential Development	Tanunda SA
2004	IQ Electrical Systems Office + Warehouse	Nuriootpa SA
2004	Works Infrastructure Site Redevelopment + Administration Building	Gilman SA
2004	The Barossa Community Store Administration Building	Nuriootpa SA
2004	Blond Coffee Café Fitout	Angaston SA
2004	Barossa Wine + Tourism Association Refurbishment Stage 1	Tanunda SA
2005	Maggie Beer Farm Shop Masterplan + Shop Redevelopment	Nuriootpa SA
2005	Mintz Guest Cottage + Barn Development	Currency Creek SA
2006	Barossa Valley Tourist Park Reception, Residence + Access Redevelopment	Nuriootpa SA
2006	Stanway Investments Commercial Redevelopment	Clare SA
2006	Miller Office Office Refurbishment	Clare SA
2006	Tosca Farm Bed + Breakfast	Eden Valley SA
2006	Westermann Townhouse Development	Gawler SA
2006	Stanway Investments Betta Electrical Redevelopment	Clare SA
2007	Barossa Enterprises Production + Administration Building	Tanunda SA
2007	Roxby Commercial Development Commercial Tenancies	Roxby Downs SA
2007	Oldfield Townhouse Development	Pt Augusta SA
2007	Clear Image Office Redevelopment	Nuriootpa SA

2008	Ahrens Group Office + Warehouse Development	Sheoak Log SA
2008	Birdwood Vineyard Development Function Room + Storage Building	Birdwood SA
2008	Mt Torrens Pavilion Entertaining Room	Mt Torrens SA
2008	Elderton House Residence	Nuriootpa SA
2008	Angaston Bowling Club New Premises	Angaston SA
2008	Lienert Australia Site + Office Redevelopment	Roseworthy SA
2008	Lyndoch B+B Guest Accomodation	Lyndoch SA
2008	Goodwin Retail Redevelopment	Tanunda SA
2008	Barossa Real Estate BRE New Office Development	Tanunda SA
2008	Orlando Wines Orlando Stage 1 New Employee Facilities	Rowland Flat SA
2008	Pines Community Pines Community Hall	Yorke Peninsula SA
2009	Tanunda Lutheran School New Multi-Purpose Hall	Tanunda SA
2009	Ahrens Group Kingsford Homestead – Guest House Refurbishment	Kingsford SA
2009	Ahrens Group Evanston Gardens Community Centre Masterplan	Evanston Gardens SA
2009	Ahrens Group Good Shepherd Lutheran School Multi Purpose Hall	Angaston SA
2009	Barossa Bowland Games, Party Room Additions + Café Alterations	Tanunda SA
2009	Lyndoch Town Hall Alterations + Additions	Lyndoch SA
2009	Barossa Valley Information Centre Tanunda Library Relocation Feasibility Study	Tanunda SA
2009	Thornton Group NewOffice Refurbishment	Nuriootpa SA
2009	Blond Coffee Alterations	Angaston SA

■ winery projects

1998-2009 various projects throughout SA and NSW

Selected projects –

1998	Heathfield Ridge Wines Cellar Door, Administration, Laboratory Buildings + Barrel Store	Naracoorte SA
1998	Haselgrove Winery Barrel Store + Administration + Laboratory Building	McLaren Vale SA
1999	Fox Creek Wines Barrel Store	Tanunda SA
1999	Kirribilly Wines Winery Development	Clare SA
1999	Shaw & Smith Winery, Cellar Door + Administration Development	Balhannah SA
1999	Pettavel Winery + Restaurant Development	Geelong Victoria
2001	Brothers In Arms Winery + Laboratory Development	Langhorne Creek SA
2002	Andrew Seppelt Wines Winery, Barrel Store, Cellar Door + Administration Development	Greenock SA
2002	Yalumba Moppa Winery Winery Development	Nuriootpa SA
2002	Barossavale Wines Cellar Door	Light Pass SA
2003	Turkey Flat Wines Barrel Store	Tanunda SA
2003	Chateau Yaldara Executive Office Refurbishment	Lyndoch SA
2003	Rockford Wines Stonewall Cellar + Administration	Tanunda SA
2003	Islander Estate Winery Development	Kangaroo Island SA
2003	Peter Lehmann Wines Entrance Gates	Tanunda SA
2004	Soul Growers Winery + Cellar Door Development	Seppeltsfield SA
2004	Rusden Wines Wine Room	Light Pass SA
2004	Turkey Flat Administration Building	Tanunda SA
2004	Bay of Shoals Winery + Cellar Door Development	Kangaroo Island SA
2004	Sieber Wines Cellar Door	Tanunda SA
2005	Casella Wines Winery Administration Development	Griffith NSW
2005	Rockford Wines Winery Storage	Tanunda SA
2005	Murray Street Vineyards Winery Development	Greenock SA
2006	Hently Farm Cellar Door	Seppeltsfield SA
2006	Langmeil Wines Courtyard Redevelopment	Tanunda SA
2007	Kaesler Wines Winery Redevelopment	McLaren Vale SA
2007	Casella Wines Cellar Door + Administration Redevelopment	Griffith NSW
2008	LoomWine Winery + Managers Residence Development	McLaren Vale SA
2008	Langmeil Wines Vineyard Shelter	Tanunda SA
2008	Schild Estate New Winery Development	Lyndoch SA
2008	Orlando Wines Masterplan Refurbishment	Rowland Flat SA
2009	Elderton Cellar Door Cellar Door Redevelopment	Nuriootpa SA

■ residential projects

1998-2009 various projects throughout the Barossa Valley and surrounding regions
Selected projects -

1998	Fechner House	Tanunda SA
1999	Williamson House Alterations and Additions	Angaston SA
1999	T-G House	Tanunda SA
1999	Paglia + Pertl House	Bridgewater SA
2000	Lihb House	Orange NSW
2000	Roether House Alterations + Additions	Greenock SA
2001	Lochert-Cross House Alterations & Additions	Mile End Adelaide SA
2001	Stokoe House Alterations & Additions	Tanunda SA
2001	Schulz House New Stair + Balcony	Tanunda SA
2001	Marr House Alterations + Additions	Orange NSW
2001	Grocke House Alterations + Additions	Tanunda SA
2002	Bitter Beach House	Point Turton SA
2002	Reeves + Grimley House	Robe SA
2002	Weeks House Alterations + Additions	Hahndorf SA
2002	Marshman House Alterations + Additions	Owen SA
2002	Schild House Alterations + Additions	Rowland Flat SA
2002	Allen House Alterations + Additions	Newtown Sydney NSW
2002	Goode House New Residence	Clare SA
2002	Neldner House Alterations + Additions	Tanunda SA
2003	Schaefer House	Tanunda SA
2003	Boehm House	Light Pass SA
2003	Grimoldby House Alterations + Additions	Tanunda SA
2003	Hayes House Alterations + Additions	Angaston SA
2003	Condon House Alterations + Additions	Manoora SA
2003	Stevenson House	Nuriootpa SA
2003	Hooper House	Robe SA
2004	Edwards House Alterations + Additions	Clare SA
2004	Martin House Alterations + Additions	Tanunda SA
2004	Nobes House Alterations + Additions	Nuriootpa SA
2004	Van Buuren House Alterations + Additions	South Brighton SA
2004	Robertson-Osbourne House Alterations + Additions	Light Pass SA
2004	Hatcher House Alterations + Additions	Tanunda SA
2004	Kingscourt Homestead Alterations + Additions	Eudunda SA
2004	Riebke House Alterations + Additions	Ebenezer SA
2004	Thom House Alterations + Additions	Tanunda SA
2004	Miller House Alterations + Additions	Tanunda SA
2004	Lienert House Alterations + Additions	Gomersal SA
2004	Bosward House Alterations + Additions	Tanunda SA
2004	Harris-Mustow House Alterations + Additions	Angaston SA

2004	Lindner Barn House	Tanunda SA
2005	J Glaetzer House Alterations + Additions	Nuriootpa SA
2005	Liebelt-Brighenti House Alterations + Additions	Tanunda SA
2005	Schilling House Pool Terrace	Tanunda SA
2005	Gomersal House	Gomersal SA
2005	Page-Neldner House Alterations + Additions	Gawler SA
2005	Adams House	Gawler SA
2005	Wood House Alterations + Additions	Waikerie SA
2005	Pauley House	Tanunda SA
2005	DeGaris House Alterations + Additions	Tanunda SA
2005	Hall House Alterations + Additions	Tanunda SA
2005	Neldner House Alteration + Additions	Freeling SA
2005	Kemp House Alterations + Additions	Tanunda SA
2005	Fielke House Alterations + Additions	Tanunda SA
2005	O'Callaghan House Alterations + Additions	Tanunda SA
2005	Edwards House Pool Terrace	Clare SA
2005	Mintz Guest Cottage Alterations + Additions	Currency Creek SA
2006	Sich House	Nuriootpa SA
2006	Schmidt House Terrace Alterations	Gawler East SA
2006	McKinnon House Alterations + Additions	Tanunda SA
2006	Plush House Alterations + Additions	Angaston SA
2006	Lochert House	Ramco SA
2006	Spence House	Balaklava SA
2006	Fuller House Alterations + Additions	Bethany SA
2006	Martin Beach House	Pt Moorowie SA
2006	Young House Alterations + Additions	Altona SA
2007	Wanguhu House Alterations + Additions	Waikerie SA
2007	Gogel House	Mt Barker SA
2007	Russell-Powell Beach House	Island Beach Kangaroo Island SA
2007	Collett-Rafferty House Alterations + Additions	Bethany SA
2007	Hooper House Alterations + Additions	Light Pass SA
2007	Hentschke House Alterations + Additions	Tanunda SA
2007	Schuster House Alterations + Additions	Tanunda SA
2007	Farley House Terrace Additions	Tanunda SA
2008	Herbert Cottage Alterations + Additions	Penrice SA
2008	McIntyre House Alterations + Additions	Mt Pleasant SA
2008	Lehmann House Alterations + Additions	Angaston SA
2008	Lindner House Alterations + Additions	Tanunda SA
2008	Mintz House Alterations + Additions	Gilberton Adelaide SA
2008	Liersch House Alterations + Additions	Tanunda SA
2008	Nichols House	Saddleworth SA
2008	Hatcher House Alterations + Additions	Tanunda SA
2008	Mather Beach House	Carrackalinga SA
2008	Jamie Gladigau The Pines Shack	Yorke Peninsula SA
2008	Loom Wines Loom House	McLaren Vale SA
2008	Elderton Wines Guest House	Nuriootpa SA
2008	Holmes House Alterations + Additions	Krondorf SA
2008	Hongell House Alterations + Additions	Nuriootpa SA
2008	Morrison House Alterations + Additions	Tanunda SA
2008	Dunford House	Springton SA
2009	Quin House Alterations + Additions	Angaston SA
2009	Frick House Alterations + Additions	Angaston SA

2009	Wilson House Alterations + Additions	Balaklava SA
2009	Hage House Alterations + Additions	Bethany SA
2009	Rowett House	Marrabel SA
2009	Wohlers House Alterations + Additions	Tanunda SA
2009	Wells House Alterations + Additions	Tanunda SA
2009	Schaefer House Pool House Additions	Tanunda SA
2009	Pfieler House	Waikerie SA
2009	Gosden House	Rowland Flat SA
2009	Heinecke House Alterations + Additions	Krondorf SA
2009	Pudney House Alterations + Additions	Vine Vale SA
2009	May House Alterations + Additions	Balaklava SA
2009	Baker House	Angaston SA
2009	Buckley House	Angaston SA
2009	Cameron Street Townhouses	Gawler SA
2009	Taylor House Alterations + Additions	Tanunda SA
2009	Schmidt House Alterations + Additions	Gawler SA
2009	Ahrens House New Entertaining Pavilion	Tanunda SA

■ publications

SA Life: Cape Cool May 2008	Hooper House
SA Life: The Best Wine Architecture in Aust March 2006	Shaw + Smith Winery, Kirrihill Winery
Adventurous Wine Architecture 2005	Shaw + Smith Winery
Australian Vignerons November / December 2004	Murray Street Vineyards
InsideOut December 2002	Shaw + Smith Winery
The Australian + New Zealand Wine Industry Journal May / June 2001	Shaw + Smith Winery
Awards 2000 Architect South Australia	Kirribilly Wines – New Winery Canopies
Vogue Entertaining + Travel Winter 2001	Shaw + Smith Winery
Geelong Advertiser December 2001	Pettavel Winery + Restaurant
The Australian Financial Review October 2000	Shaw + Smith Winery
The Advertiser, Food + Wine November 2000	Shaw + Smith Winery
Naracoorte Herald February 2000	Heathfield Ridge Wines

■ curriculum vitae

>name

Jamie Gladigau

>position

Company Director / Project Director / Quality Manager

>qualifications

Bachelor of Architecture (Hons) *University of South Australia* - 1992

Architects Accreditation Council of Australia - 1996

>memberships/associations

Royal Australian Institute of Architects- Member

South Australian Board of Architects- Member- Registered Architect

>experience

1998-current

JBG Architects Pty Ltd

1995-1998

Tanner & Associates Pty Ltd

Assistant Project Architect

Cranbrook School Sydney NSW:

New Science & Technology Building

7.0M

Assistant Project Architect

Sydney Grammar School Sydney NSW:

Palladium Building Refurbishment

1.3M

Stanley Street Building Refurbishment + Extension

3.3M

Pavilion + Grandstand

0.6M

Project Architect

Sydney Grammar School Sydney NSW:

Design + Technology Refurbishment

1.5M

Assistant Project Architect

Bondi Pavilion Sydney NSW

Refurbishment + Extension

1.5M

1989-1995

JBG Design - Various Contract Positions

Architectural Assistant

Architectural design + documentation services for practices within Adelaide + Barossa Valley;

small to medium scale residential, commercial,

community and industrial projects.

>recent projects

As company director Jamie has involvement in all phases of projects produced by the office. Refer company portfolio for project listings and details.

■ curriculum vitae

>name

Steven Bell

>position

Project Manager

Steven has recently rejoined JBG Architects and brings to the company expanded commercial design and project management expertise.

>qualifications

Associate Diploma Architectural drafting *Gilles Plains College of TAFE* – 1989

Advanced Certificate in Building Technology (Estimation/Administration) – 1993

Project Management *University of Adelaide Graduate School of Management* – 1996

Professional Certificate in Management *University of Adelaide graduate School of Management* - 2001

>experience

2008-current

JBG Architects Pty Ltd

Project design + management

2005-2007 Ahrens Engineering

Project design + management

Macquarie Goodman Exel Warehouse & Office Facility	\$15.0m
Macquarie Goodman Linfox Warehouse & Office Facility	\$9.0m
Macquarie Goodman Tobacco Warehouse & Office Facility	\$4.0m
Macquarie Goodman Iron Mountain Warehouse & Office Facility	\$6.0m
Macquarie Goodman Lafarge Warehouse & Office Facility	\$5.0m
Macquarie Goodman Linfox Perth Warehouse & Office Facility	\$24.0m
Metalcraft Warehouse & Office Facility	\$3.5m
Holco Meats Production Area, Amenities & Office	\$2.5m
LR&M Workshop & Office	\$1.5m
Various small canopies & warehouses.	

2004-2005 JBG Architects Pty Ltd

Architectural design + documentation services

focusing principally on commercial + winery design.

1993-2004 The Yalumba Wine Company

Redesign of Winery vintage cellar

New production offices, tank farms and storage buildings

Maintenance Workshop Building

New Laboratory

Winery + Cellar Door Sales for Nautilus – New Zealand

Cellar Door Sales for Menzies – South East

New Vineyard Nursery

New Interpretive Wine Centre for Jansz – Tasmania

Various office renovations in state branches

Heritage faced upgrade to main administration building

New winery development

1987-1993

Jackman Gooden Architects

Architectural design and documentation services on a variety of commercial projects

■ curriculum vitae

>name

Katrina Swiatczak

>position

Architect - Graduate

>qualifications

Bachelor of Architecture *University of Adelaide - 1998*

Bachelor of Architectural Studies *University of Adelaide - 1995*

>experience

2006-current

JBG Architects Pty Ltd

2005-2006 **Folland Panozzo Architects**

James Place, New Student Housing, Adelaide, SA

Stirling Hotel Redevelopment, Stirling, SA

Centennial Park Cemetery, Pasadena, SA

Old Noarlunga Hotel Redevelopment, Old Noarlunga, SA

Taminga Hotel Redevelopment, Clare, SA

2004-2005 **Brown Falconer**

Brown House-New Residence, Adelaide, SA

Hopwood/O'Keefe Redevelopment/Heritage

Conservation, High Gate SA

Penneshaw Museum Extension, Kangaroo Island, SA

Morgan Primary School Redevelopment, Morgan, SA

Cambrai Area School, Cambrai, SA

1999-2004 **Ken Mar Architects**

Quond Tart Woodfield Retirement Village Development,
Sydney, NSW

Southern Cross Care, Aged Care Development

Broken Hill, SA

Loreto Collage Redevelopment, Adelaide, SA

Woolworths Supermarket, Strathalbyn, SA

Cornerstone Collage Redevelopment, Mt Barker, SA

1999-2000 **Fred Phillis + Associates Architects**

>recent projects

Kowald Dunn New Winery

Miller Office Refurbishment

Barossa Wine + Tourism

Sich House

Kingscourt

Soul Growers Winery

curriculum vitae

>name

Graham Baker

>position

Architectural Technician

>qualifications

Diploma Building Design + Technology *Douglas Mawson Institute*

>experience

2007-current

JBG Architects Pty Ltd

■ curriculum vitae

>name

Claire Boland

>position

Office Manager

Administration / Finance/ Marketing / Human Resources / Reception

>qualifications

Certificate III Interior Design + Decoration *Douglas Mawson Institute - 1999*

Certificate III Business Administration *Murray Institute - 2004*

Diploma Interior Design + Decoration *Douglas Mawson Institute - currently undertaking*

>experience

Current

JBG Architects Pty Ltd

2007 - 2008

Clubhouse - Golf in the City

events manager

office / administration manager

2004 - 2007

JBG Architects Pty Ltd

2003 - 2004

Salters Restaurant

functions co-ordinator

1999-2000

The Office Shop

customer service / sales

assistance in general administration

>recent projects

Tanunda Town Band Hall

Barossa Community Store

■ project referees

Commercial

Martin Shaw 8398 0500
Proprietor
Shaw + Smith Wines

Bryan Edwards 8842 3400
Proprietor
Clare Centre Development

Andrew Seppelt 8562 8373
Proprietor
Murray Street Vineyards

Howard Tanner (02) 9281 4399
Director
Tanner Architects

Residential

Stephen Fechner 85632 011
Proprietor
Fechner House

Chris Bitter
Proprietor
Bitter Beach House

Sue Grocke 8563 2679
Proprietor
Grocke House

J B G
ARCHITECTS

residential - commercial - winery - planning - architecture - interiors - landscape

■ c o m m e r c i a l p r o j e c t s

J B G
ARCHITECTS

residential - commercial - winery - planning - architecture - interiors - landscape

■ w i n e r y p r o j e c t s

J B G
ARCHITECTS

residential - commercial - winery - planning - architecture - interiors - landscape

■ residential projects